

MICRO SWITCH

A DIVISION OF HONEYWELL INTERNATIONAL INCORPORATED (CONRADT)  
FREEPORT, ALABAMA

FED MFR CODE 91929

SWITCH - ENCLOSED

CATALOG LISTING  
151ML2

THIS DRAWING COVERS A PROPRIETARY ITEM AND IS THE PROPERTY OF MICRO SWITCH A DIVISION OF HONEYWELL THIS DRAWING IS NOT TO BE COPIED OR USED WITHOUT THE APPROVAL OF MICRO SWITCH



(M) 151ML2  
ISSUE 3

151ML2

M

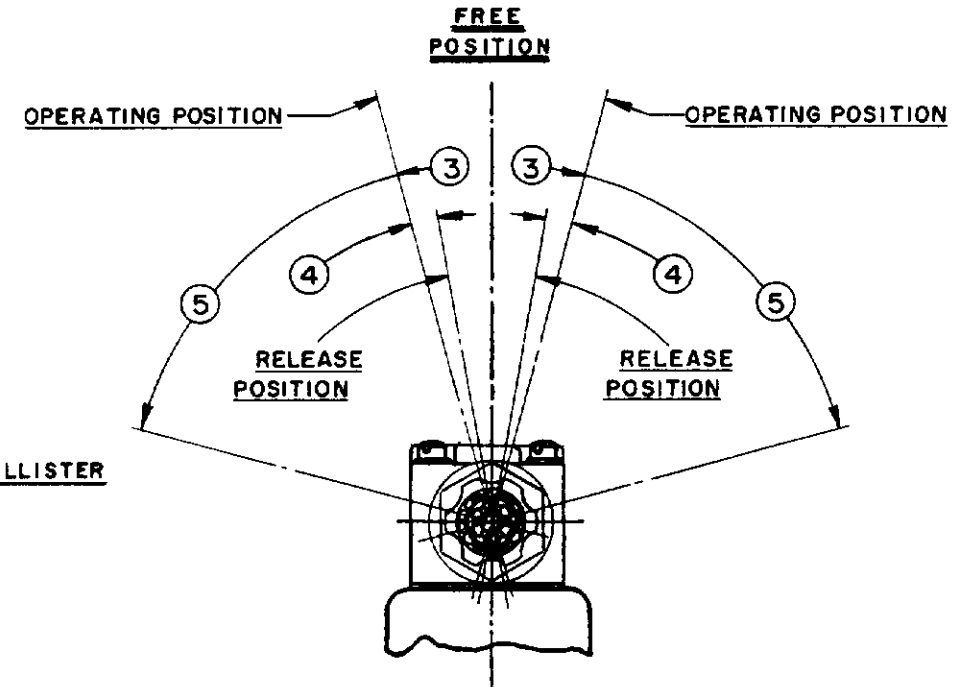
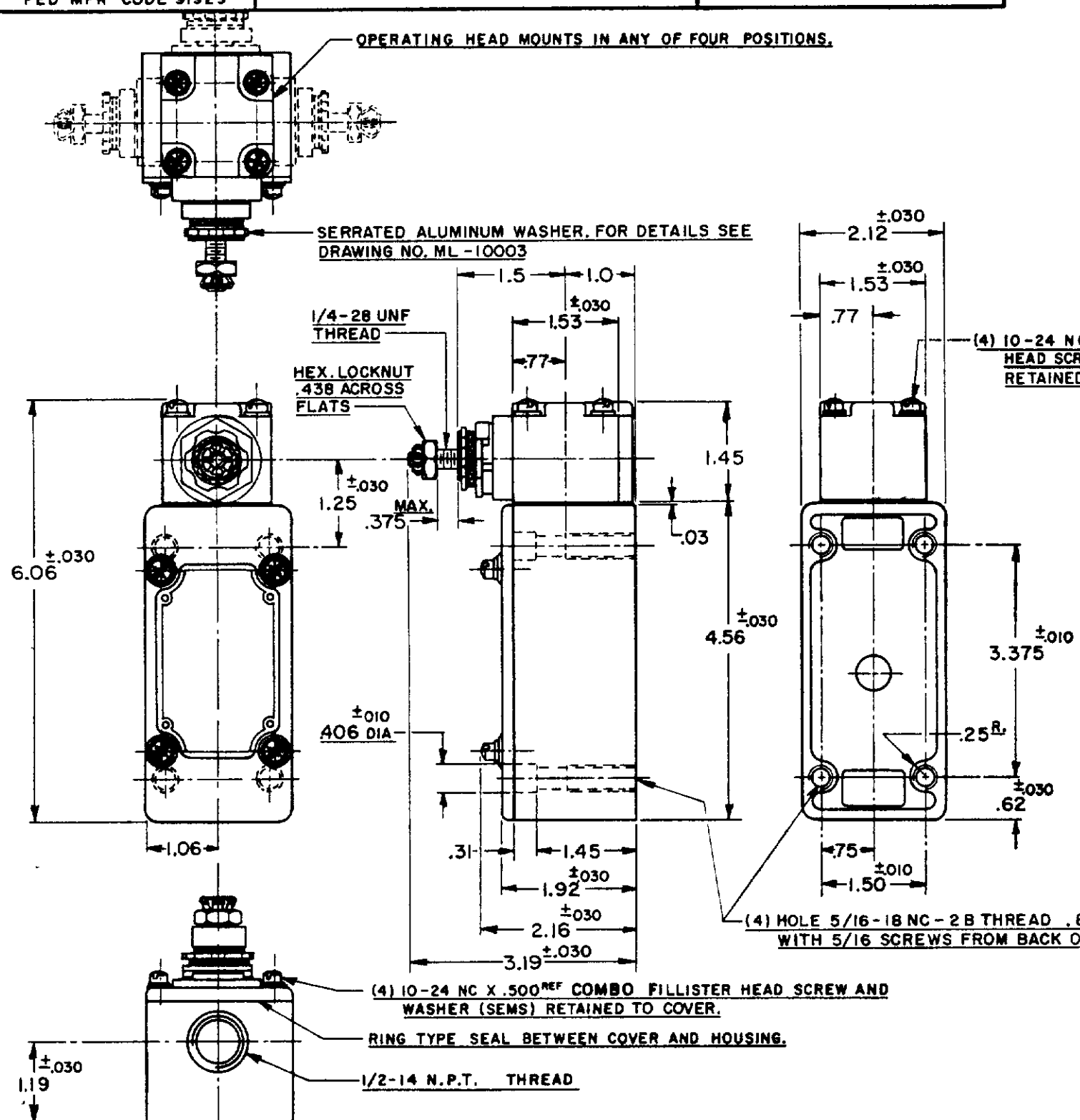
DRAWING NUMBER

ISSUE  
A 10  
B X  
C X  
D X  
E X  
F X  
G X

REVISIONS

A	CO11247	OMW	17 MAR 58
B	CO12789	M.B.F.	15 MAY 58
C	CO22643	D.W.C.	21 MAR 67
D	CO26064	M.B.S.	25 JUNE 69
E	CO52194-D	Y.S.K.	26 SEPT 83
F	CO68051-B	J.A.P.	17 DEC 84
G	CO74207	G.J.W.	23 APR 85

REPLACES  
RELEASE NO  
CHECK  
K.F.M. 4-APR-58  
CHECK  
J.W.M. 4-APR-58  
CHECK  
G.C.H. 4-APR-58  
DRAWN  
O.M.W. 17 MAR 58



NOTES

- IT IS ESSENTIAL TO PREVENT ENTRANCE OF HARMFUL AGENTS THRU THE CONDUIT OPENING TO OBTAIN THE FULL BENEFIT OF THE SEALED CONSTRUCTION PROVIDED IN THIS UNIT
- SWITCH IS ASSEMBLED FOR ACTUATION IN EITHER DIRECTION TO CONVERT SWITCH FOR ACTUATION EITHER CLOCKWISE OR COUNTER CLOCKWISE DIRECTION ONLY, REMOVE THE HEAD AND SLIDE THE CAM TOWARD THE REAR OF THE HEAD SUFFICIENTLY TO DISENGAGE FROM THE FLATS ON THE SHAFT. ROTATE THE CAM 90° IN THE OPPOSITE DIRECTION OF THE ACTUATION DESIRED AND RE-ENGAGE THE CAM WITH THE FLATS ON THE SHAFT
- SHAFT MAY BE ADJUSTED TO ACTUATE THE SWITCH IN THE CLOCKWISE DIRECTION ONLY, THE COUNTER-CLOCKWISE DIRECTION ONLY OR IN BOTH DIRECTIONS

<b>CHARACTERISTICS</b>		<b>ELECTRICAL DATA</b>		SCALE 1/2 TO 1
OPERATING TORQUE -- 5 11/32 LBS-IN. MAX.		CONTACT ARRANGEMENT		DO NOT SCALE PRINT
FULL OVERTRAVEL TORQUE -- 7 1/8 LBS-IN. MAX.		TWO CIRCUIT DOUBLE THROW		UNLESS OTHERWISE SPECIFIED DIMENSIONS ARE IN INCHES <b>TOLERANCES ARE:</b> ONE PLACE ( ) ±.030 TWO PLACE ( 00 ) ±.015 THREE PLACE ( 000 ) ±.008 ANGLES ±
RELEASE TORQUE --- 7/16 LB-IN MIN.		DOUBLE BREAK		
PRETRAVEL --- ③ --- 15° MAX.		10A-120, 240, 480, OR 600 VAC		
DIFFERENTIAL TRAVEL --- ④ --- 7° MAX.		1/2 HP-120 VAC, 1 HP-240 VAC		
OVERTRAVEL --- ⑤ --- 60° MIN.		0.8 A-115 VDC, 0.4 A-230 VDC		UL
SWITCH-BASIC REPLACEMENT --- IMNI		PILOT DUTY 600 VAC MAX		
		SP		WEIGHT